

## Appendix 1

# Stakeholder Participation and Communication Process for the Cape Peninsula National Park Heritage Resources Management Plan

## 1 INTRODUCTION

The inclusive participation of all key stakeholders is critical to the success of the stakeholder participation process. The history of the Park, rooted in the policies of Apartheid has resulted in a deep and contradictory sense of alienation and also identification with the heritage resources of the Park amongst many communities surrounding it as well as on the Cape Flats and beyond.

At the same time there are stakeholders who are deeply familiar with the Park and are very involved in its sustainable development as a critical heritage resource site. The stakeholder process will ensure that it reaches all stakeholders who utilise or perceive the Park as an important heritage resource.

## 2 PUBLIC PARTICIPATION APPROACH

We propose that the stakeholder participation process for the Cape Peninsula National Park Heritage Resources Management Plan be conducted in the following manner:

The process is designed to create opportunities for key local stakeholders to engage in and highlight their issues, concerns and suggestion associated with the proposed Heritage Resources Management Plan.

Common Ground Consulting proposes the following public participation approach:

- Reaching agreement on the stakeholder participation process with the client
- Compile a stakeholder database (see draft list attached as Annexure A)
- Announcing the project by placing of advertisements in the Local and Metro Newspapers
- Develop and disseminate Background Information/Capacity Building Documents
- *Press Releases and Feature Stories (focused stories on Cultural Heritage Places and Resources)*
- *Solicit television coverage*
- *Radio interviews (Panel discussion on local community stations with stakeholder phone ins)*
- *Web page (project information, announcements and documents)*
- *Central Information Contact*

- Capacity Building Event at the University of the Western Cape or Peninsula Technikon (take the information to the People) To deal with specific aspects of heritage resources relating to vision, identification of heritage resources, rating significance, commenting on statements of heritage significance and informing the development of a heritage resources management plan for the Park.
- Issues, concerns and suggestion raised at the Capacity Building Event are recorded and incorporated into the next phase and taken into key focus group workshops
- Key focus group workshops

### **Task 1: Reaching agreement on the stakeholder participation process with the client**

#### **Aim:**

To clarify the expectations of client and agree upon the stakeholder participation process.

#### **Activities will include:**

- Obtaining all necessary background information for the public participation process
- Meetings with the client and project team to clarify requirements relating to the stakeholder participation process
- Identify key stakeholders

### **Task 2: Placement of advertisements in local newspaper**

#### **Aim:**

To inform local stakeholders within the Cape Metropolitan Area of the proposed Heritage Resources Management Plan. To invite stakeholders to participate in the process that seeks to create mutually beneficial Heritage Resources Management Plan for the Park.

#### **Activities will include:**

- Compilation of newspaper advertisement
- Forward press release to the local newspaper
- Placing of the advertisement in the Local and Metro newspapers

### **Task 3: Compilation of stakeholder database (in parallel with task 1 &2)**

#### **Aim:**

To compile a comprehensive database of key stakeholders who have a direct interest in the proposed development.

#### **Activities will include:**

- Compilation of database

- Database size (440 stakeholders)

#### **Task 4: Develop and disseminate Background Information/Capacity Building Document**

##### **Aim:**

To introduce the proposed development to stakeholders and scope for issues and concerns relating to the proposed activity.

##### **Activities will include:**

- Compile background information/capacity building document (BID)
- Circulate BID to stakeholders across the Cape Metropolitan Area

#### **Task 5: Parallel Communication and information Strategy will include:**

- *Press Releases and Feature Stories (focused stories on Cultural Heritage Places and Resources)*
- *Solicited television documentary coverage*
- *Radio interviews (Panel discussion on local community stations with stakeholder phone ins)*
- *Web page (project information, announcements and documents)*
- *Central Information Contact*

#### **Task 6: Capacity Building Event**

##### **Aim:**

The aim of the Capacity Building Event is to inform stakeholders about the proposed Heritage Management Plan. To elicit issues, concerns and suggestions, responses and additions to the identified heritage resources displayed. To build capacity in respect to heritage resource management. To provide stakeholders with the opportunity to explain and engage with each other around those elements of the Parks heritage they hold most dearly.

##### **Activities will include:**

- Capacity Building
- Descriptive information to orientate and inform stakeholders about the Heritage Resources Management Plan
- Professional team to record and clarify stakeholders questions
- Elicit issues, concerns, suggestions, additions and opinions on management for the draft Heritage Resources Management Report

**Task 7:** Incorporate issues, concerns, suggestions and additions raised into the draft Heritage Resources Management Plan and Register

**Task 8:** Circulation of the draft Heritage Resources Management Plan and interactions with focus groups on specific areas of concern and interest to inform the findings of the Heritage Resources Management Plan and Register.

## ANNEXURE: Draft list of stakeholders

### **Cape Peninsula National Park Interested and Affected Parties - Heritage**

#### **Academic: University of Cape Town**

Centre for African Studies  
Centre for Higher Education Development  
Centre for Popular Memory  
Council for Geoscience  
Department of Archaeology  
Department of Botany  
Department of Geomatics  
Environmental Evaluation Unit  
English Department (Media Studies)  
Faculty of Engineering  
School of Education  
Architecture and Planning  
Environmental and Geographical Science  
Urban & Regional Planning  
Vernacular Architecture Society of South Africa

#### **Academic: University of the Western Cape**

Institute for Historical Research  
Department of History

#### **Community Based Organisations and Non-government organisations**

A Mountain Walking Group  
African Environmental Movement  
Afro Montane Information Forum  
ANC Environmental Policy Desk / PMF  
Friends of Silvermine Nature Area  
Friends of Simon's Town Coastline  
Friends of the Simon's Town Coastline  
Friends of Tokai Forest  
Gleemore Cape Flats Civic Association  
Glencairn Civic Association  
Gorichouqua Tribal House  
Green Alliance  
Green Party of South Africa/New Eden Foundation  
Griqua National Conference  
Habitat Council  
Historical Society of Cape Town  
Honourary Rangers  
Hout Bay & Llandudno Heritage Trust  
Hout Bay Civic Association  
Hout Bay Heights Residents Association  
Hout Bay Ratepayer's Association (HBRA)  
ILASA for Cape Town Heritage Trust & Individual  
Ilitha Lomso  
Imizamo Yethu Civic Association/Hout Bay RDP Forum  
Kalk Bay / St James / Clovelly Ratepayers Assoc  
KERIC / Khayelitsha Development Forum  
Kirstenhoff Residents & Ratepayers Association  
Kommetjie Environmental Awareness Group  
Kommetjie Residents' Association

Bergvliet/Meadowridge Ratepayers Association  
Bloubergstrand Ratepayers Association  
Botanical Society of SA  
Boulders Heritage Association  
Cape Flats Development Agency  
Camps Bay Ratepayers & Residents Association  
Cape Bird Club  
Cape Cultural Heritage Development Organisation  
Cape Mazaar Society  
Cape Natural History Club  
Cape Province Mountain Club  
Cape Town Ecology Group  
Cape Town Environment Trust  
Centre for Conservation Education  
City Bowl Ratepayers' and Residents' Association  
Claremont Mosque  
Cochoqua Tribal House  
Conservation Committee MCSA  
Constantia Property Owners Association  
Constantia Ratepayers  
Crossroad Environment Project  
Cultural Resource Management  
Democratic Party

Ekupumeleni Environmental YC  
EYETHU  
Federation of Cape Civic Associations-Bellville  
Fish Hoek Alien Vegetation Control Group  
Fish Hoek Residents & Ratepayers' Assoc.  
Fish Hoek Residents Association  
Friends of Cecelia Forest  
Friends of Constantia Valley Green Belt  
Friends of Liesbeek  
Friends of Lion's Head / SHAPE  
Friends of Newlands Forest  
Friends of Scarborough/Marine Environ Educ Trust

Peninsula Mountain Forum/WESSA  
Red Hill Landowners Conservation Group  
Philippi Environmental Project  
Royal Society of South Africa  
SA Malay Cultural Society  
Save Table Mountain Campaign  
Scarborough Ratepayers & Residents' Association  
Schotsche Kloof Civic / Tana Baru Trust  
Schotsche Kloof Civic Association Bo-Kaap Dev  
Sentinel Residents Association  
Silvermine Valley Coalition  
Simon van der Stel Foundation  
Simon's Town Flora Conservation Group  
Simons Town Ratepayers & Residents' Association  
Simonstown Museum Representative Committee  
Teachers Environmental Structure

Llandudno Civic Association (LCA)	The Cape Town Herb Group
Masifundisane Cultural Group	The Fairest Cape Association
Masiphumelele SANCO	The South African Military History Society
Mistycliffs Ratepayers Assoc	Tokai Residents Association
Muizenberg & Lakeside Ratepayers Association	Tsoga Environmental Resource Centre
Muizenberg Ecological Awareness Group	Vukani Environment
Muslim Judicial Council	Western Cape Civic Associations
Muslim Women's Federation of SA	Western Cape Community Organisation
National Khoisan Consultative Conference (UWC)	Western Cape Marine Conservation Society
National Khoisan Council SA	Wildlife & Environmental Society of SA
NATSOC	Wolfgat Conservation Association
NEDEP	Wolfgat Nature Reserve
Noordhoek & District Civic Association	WP Athletics (Cape Slave Route Challenge)
Oudekraal Community	Zandvlei Trust / FBAC / False Bay Env. Forum
Cape Town Heritage Trust	Zeekoevlei Civic Association
Casteel De Goede Hoop	<b>Other Institutes</b>
Hout Bay Museum Board of Trustees	Simonstown Heritage Museum
National Library of South Africa	South Africa National Gallery
Robben Island Museum - Heritage Department	South African Missionary Museum
SACH Museum, Iziko Museums of Cape Town	South African Museum
<b>Professional Bodies/ CPNP Consultants</b>	Agency for Cultural Resource Management
ACL Urban Renewal	Bo-Kaap Museum
Cape Institute of Architects	<b>National Government</b>
MLH Architects and Planners	South African Resource Heritage Association
EcoAfrica Environmental Consultants	Department of Environmental Affairs and Tourism
SA Institute of Landscape Architects	Department of Arts Culture and Science
SA Museums Association	Department of Public Works
Settlement Planning Services (Setplan)	South African National Defence Force
Chittenden Nicks de villiers	<b>Provincial Government</b>
Doug Jeffery Environmental Consultants	Provincial Heritage Council
Gapp Architects & Urban Designers	Department of Cultural Affairs and Sport
Ian Ford Deon Bronkhorst Landscape Architects	Dept of Env. Affairs & Development Planning
Lucien Le Grange Architect	Provincial Museum Service
MCA Urban & Environmental Planners	<b>Local Government</b>
NM & Associates Planners & Designers	City of Cape Town (South Peninsula Region)
PC Architects	City of Cape Town (CMC Administration)
Phaphamani Heritage Research Consultants	City of Cape Town (Cape Town Region)
Revel Fox & Partners Architects cc	<b>Business</b>
The Archaeological Society	Western Cape Traditional Healers Association
<b>Tourism</b>	The Cape Town Partnership
Cape Metro Tourism	ACG Architects & Development Planners
Western Cape Tourism Board	Cape Chamber of Commerce & Industry
Cape Capers Tours	Cape Malay Chamber of Business
Cape Team Tours	Cape Regional Chamber
Cape Town Tourism	Corporate Image (Cape) (Pty) Ltd
Development Agency for Tourism Advancement	Western Cape Traders Association
False Bay Tourism Bureau	
Grass Route Tours	
Khayelitsha Environmental & Tourism Forum	
Legend Tourism Services	
Peninsula Tourism	
Tana Baru Cultural Tours	
Township Tours	
Otherside Tours	

**Appendix 2: Review of physical planning of visitor sites in the CPNP: integration of heritage management**

**Introduction**

The following tables reviews detailed visitor site planning processes in terms of the extent of integration of the significance and vulnerability of heritage resources. For the purpose of this brief review, the following definitions apply. It is important to note that the standards applied to heritage planning and assessments are currently in development within the relevant professional bodies. Refer to section 7.4 of the status report for further detailed description of these terms.

**Cultural significance:** means historical, architectural, aesthetic, environmental, social or technological or scientific value or significance (NHRA 1999).

**Vulnerability:** is based threats due to physical condition, public safety concerns, pressures for tourist facilities, access, current and proposed use, etc. viewed together with the significance of a resource.

**Status of research:** considers existing research reports, existing heritage assessments, recommendations for further research, references (publications, reports, transcripts, etc.) and references (maps, plans, photos, etc.)

**Proposed management actions:** includes policies for retaining/enhancing significance (includes further research and assessment), maintenance and repair, restoration, adaptive use and interpretation.

The specific standards and protocols for significance statements are currently in development. It is also important to note that a number of sites mentioned below are not under the management of the CPNP. These are marked below by an asterix (\*).

**i) Visitor destinations**

These are essentially the Park's main tourist sites which are visited with the express purpose of seeing or experiencing a specific attraction. They are sites of relatively short duration of visit. The main activity undertaken here is sightseeing.

<b>Visitor site</b>	<b>Preliminary statement of significance</b>	<b>Vulnerability statement</b>	<b>Status of heritage research</b>	<b>Proposed heritage management actions</b>
<b>Signal Hill Lookout and Lion's Head:</b> part of the current Signal Hill – Lions Head – Tafelberg Road planning Study (Orion Planning). Mr A Lillie, is building on work undertaken by Prof. F Todeschini in the early 1990s (reviewed in 2000). This work is ongoing.	To be produced in current study to inform planning proposals	To be produced in current study to inform planning proposals	This planning area is relatively well-researched. Information is held by CPNP, SAHRA and CCT	Some management actions are recommended in previous and current studies
<b>Upper Cable Station:</b> Planning undertaken predated the NHRA but subject to stringent EMS requirements with the involvement of the then National Monuments Council, as Table Mountain is a proclaimed	None	None	Unknown – however interpretive material recently developed to give equal emphasis to cultural and natural resources.	Management actions are subsumed within EMS process.

Visitor site	Preliminary statement of significance	Vulnerability statement	Status of heritage research	Proposed heritage management actions
National Monument (now a Provincial Heritage Site)				
<b>Cape Point:</b> Detailed planned predated NHRA. Analytical study undertaken by B. Oberholzer No further development planned beyond interpretation displays.	None	None	Unknown	None other than proposed interpretation displays
<b>Cape of Good Hope:</b> No infrastructural development planned other than interpretation displays	None	None	Unknown	None other than interpretation displays
<b>Boulders Beach:</b> New facilities under construction. Planning and design informed by lengthy EIA process including an internally produced historical review in consultation with SAHRA.	Heritage significance addressed from an historical perspective. Area is part of proposed urban conservation area.	Vulnerability of resources considered in planning.	Unknown	Interpretation facilities and displays.
<b>Silvermine Lookout:</b> No planning undertaken.	None	None	None	None
<b>East Fort:</b> Work undertaken by B. Oberholzer in 1996 to inform landscape upgrading of site. Further historical analysis was undertaken by Hugh Floyd together with a archaeological scan by Dr Ute Seemann.	None	None	Research documents held by SAHRA and Hout Bay Museum. Tim Hart appointed to undertake research	None as yet – under investigation
<b>*Mosterts Mill:</b> No planning undertaken. University of Cape Town commissioned for the adjoining Avenue Precinct in 2001 (Conservation Development Consortium).	None	None	Information held by SAHRA	None (outside of Park)

**ii) Mixed use sites**

These sites are also seen as major tourist sites serving a wide range of purposes (e.g. leisure, transit, education, refreshments, accommodation, etc).

Visitor site	Preliminary statement of significance	Vulnerability statement	Status of heritage research	Proposed heritage management actions
<b>Kloof Nek:</b> forms part of the Signal Hill – Lions Head – Tafelberg Road planning Study (Orion Planning). Mr A Lillie, is building on work undertaken by Prof. F Todeschini in the early 1990s (reviewed in 2000). This work is ongoing.	To be produced in current study to inform planning proposals	To be produced in current study to inform planning proposals	This planning area is relatively well-researched. Information is held by CPNP, SAHRA and CCT	Some management actions are recommended in previous and current studies

Visitor site	Preliminary statement of significance	Vulnerability statement	Status of heritage research	Proposed heritage management actions
<b>Constantia Nek:</b> Current planning process (Piet Louw) is being informed by a heritage study (Dr S. Harris)	In process	In process	Reports lodged with SAHRA, CCT and CPNP	In process
<b>Rhodes Memorial and Zoo Site:</b> part of the Groote Schuur Estate planning. Recent planning study (Chittenden Nicks de Villiers) builds on B. Oberholzer's and Prof. F Todeschini's work (1992) reviewed by Dr N Baumann in current study.	Available but focussed on biophysical, historical and aesthetic aspects of heritage.	Partly completed (as for significance statement)	Documentation lodged with SAHRA, CCT and CPNP an is well referenced.	Preliminary recommendations provided.
<b>Mount Pleasant:</b> part of the Groote Schuur Estate planning area. Detailed heritage analysis provided (Dr S Harris)	Provided	Provided	Documentation held by SAHRA, CCT and CPNP.	Preliminary recommendations provided.
<b>*Tokia Manor Precinct:</b> Tokai and Cecilia Forests will be incorporated into the CPNP. SANParks is committed to a public planning process to balance the amenity, cultural landscape significance and timber production values. PAWC commissioned heritage study as part of planning study.	Provided	Provided	Documentation held by SAHRA, CCT and PAWC.	Provided
<b>Orange Kloof Eco Museum:</b> Buildings adapted with SAHRA authorisation (Rennie & Scurr Architects). CPNP plans to undertake heritage analysis to determine optimal use. Alien trees impacting buildings removed.	None (to be commissioned)	None (to be commissioned)	Unknown	Heritage analysis to inform future management actions.
<b>*Miller's Point:</b> Heritage study commissioned in 2001 (Pentz & Berman) informed planning for the site.	Provided	Provided	Documentation held by SAHRA and CCT	Preliminary recommendations provided
<b>Apostle Battery:</b> No development currently planned on this site. Preliminary baseline studies undertaken (2001) by MCA.	None	None	Unknown	None
<b>*Tamboorskloof Magazine Site:</b> part of the Signal Hill, Tafelberg Road study area. Previous detailed study undertaken by Dr N Baumann (2000)	Provided	Provided	Documentation held by SAHRA and CCT.	Preliminary recommendations provided
<b>Van Riebeeck Park:</b> Part of the Signal Hill, Tafelberg Road study area. Comprehensive heritage analysis undertaken in 2000 (Dr N Baumann and Prof. L. Le Grange).	Provided	Provided	Documentation held by SAHRA and CCT.	Preliminary recommendations provided.
<b>Mount Pleasant:</b> part of the Groote Schuur Estate planning area. Detailed heritage analysis provided (Dr S Harris)	Provided	Provided	Documentation held by SAHRA, CCT and CPNP.	Preliminary recommendations provided.
<b>Round House and Glen Precinct:</b> Current EIA process (common Ground) for proposed development includes full HIA	Provided	Provided	Documentation held by SAHRA, CCT and CPNP.	Preliminary recommendations provided.

Visitor site	Preliminary statement of significance	Vulnerability statement	Status of heritage research	Proposed heritage management actions
(Graham Jacobs), preceded by planning process inclusive of heritage analysis.				
<b>Smitswinkel Forest Station:</b> No planning or heritage analysis has yet been commissioned.	None	None	Unknown	None
<b>*Kirstenbosch:</b> Planned for and managed by the National Botanical Institute	None	None	Unknown	None
<b>Bordjiesdrif and Buffels Bay:</b> A planning study has been commissioned incorporating a heritage analysis.	Pending	Pending	UCT Archaeological Contracts Office undertook study. Documentation held by UCT, SAHRA and CPNP	Pending
<b>Buffelsfontein Homestead:</b> has been adapted for use as an interpretation centre, informed by detailed building restoration design approved by SAHRA.	None for site	None for site	Unknown	Plan for retention of historical trees within a landscape plan
<b>Silvermine Homestead:</b> Buildings adapted to house CPNP offices, informed by conservation architect Dirk Visser.	None for site	None for site	Unknown	None for site
<b>Sunbird Centre:</b> Buildings adapted previously by the CCT (pre-1995). No action proposed currently.	None	None	Unknown	None
<b>*Soetwater:</b> managed by CCT. No heritage analysis has been undertaken. Future plans uncertain.	None	None	Unknown	None
<b>*West Fort:</b> This site is unlikely to come under CPNP management. Preliminary analysis undertaken by Hout Bay Museum.	None	None	Held by Hout Bay Museum	None
<b>Koeël Bay:</b> A planning study undertaken (Phillip Burns). A full planning study, incorporating a heritage analysis will be part of a concession EIA process.	None	None	Unknown	None

**iii) Transit sites**

These sites were identified as transport interchanges and points of embarkation into the Park. The following sites were identified.

Visitor site	Preliminary statement of significance	Vulnerability statement	Status of heritage research	Proposed heritage management actions
<b>Lower Cable Station:</b> Part of the Signal Hill, Tafelberg Road study area.	As above	As above	As above	As above
<b>Newlands Forest:</b> A management plan (1996)	None	None	Unknown	None

Visitor site	Preliminary statement of significance	Vulnerability statement	Status of heritage research	Proposed heritage management actions
developed by CCT is guiding current management actions. No heritage analysis undertaken.				
<b>*Cecilia Plantation:</b> will be incorporated into the CPNP. SANParks is committed to a public planning process to balance the amenity, cultural landscape significance and timber production values.	None	None	Unknown	None
<b>Noordhoek Beach:</b> An upgrade of beach parking planned. Heritage analysis not seen as necessary by CPNP.	None	None	Unknown	None
<b>Scarborough Beach:</b> Plan developed for rationalisation of parking and beach access. Heritage analysis not seen as necessary by CPNP.	None	None	Unknown	None
<b>Sandy Bay Nek:</b> Plan developed by Planning Partners for WWFSA including rationalisation of parking and beach access.	None	None	Unknown	None
<b>*Sunset Rocks:</b> No action anticipated.	None	None	Unknown	None
<b>Silvermine South:</b> No development proposals. Removal of plantation trees by CCT (in the past) and CPNP (post 2000 fire) has been contentious in the context of heritage landscape issues. Landscaping design for parking area has been undertaken.	None	None	Unknown	None
<b>Brigantine Triangle:</b> No proposed development.	None	None	Unknown	None

**iv) Low intensity leisure sites**

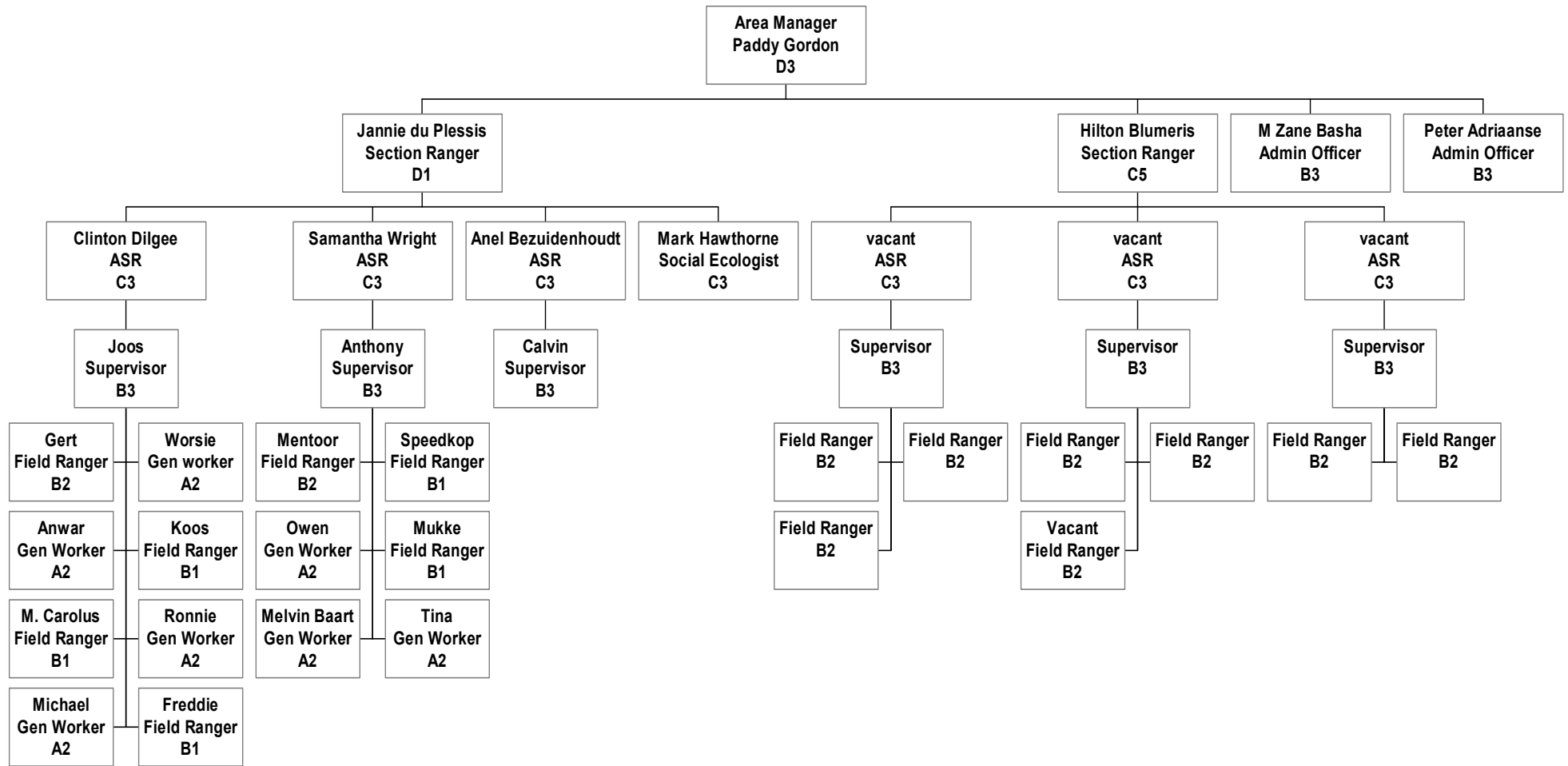
These sites are seen as places of relaxation and socialisation in a natural setting. Caution should be applied in emphasis of natural heritage at the expense of cultural heritage.

Visitor site	Preliminary statement of significance	Vulnerability statement	Status of heritage research	Proposed heritage management actions
<b>*Tokai Plantation Area:</b> will be incorporated into the CPNP. SANParks is committed to a public planning process to balance the amenity, cultural landscape significance and timber production values.	None	None	Unknown	None
<b>Perdekloof and Wildeschutsrand Picnic Areas:</b> Planted trees currently being maintained pending the outcome of the HRMP. Invasive trees in wetland area are being removed.	None	None	Unknown	None

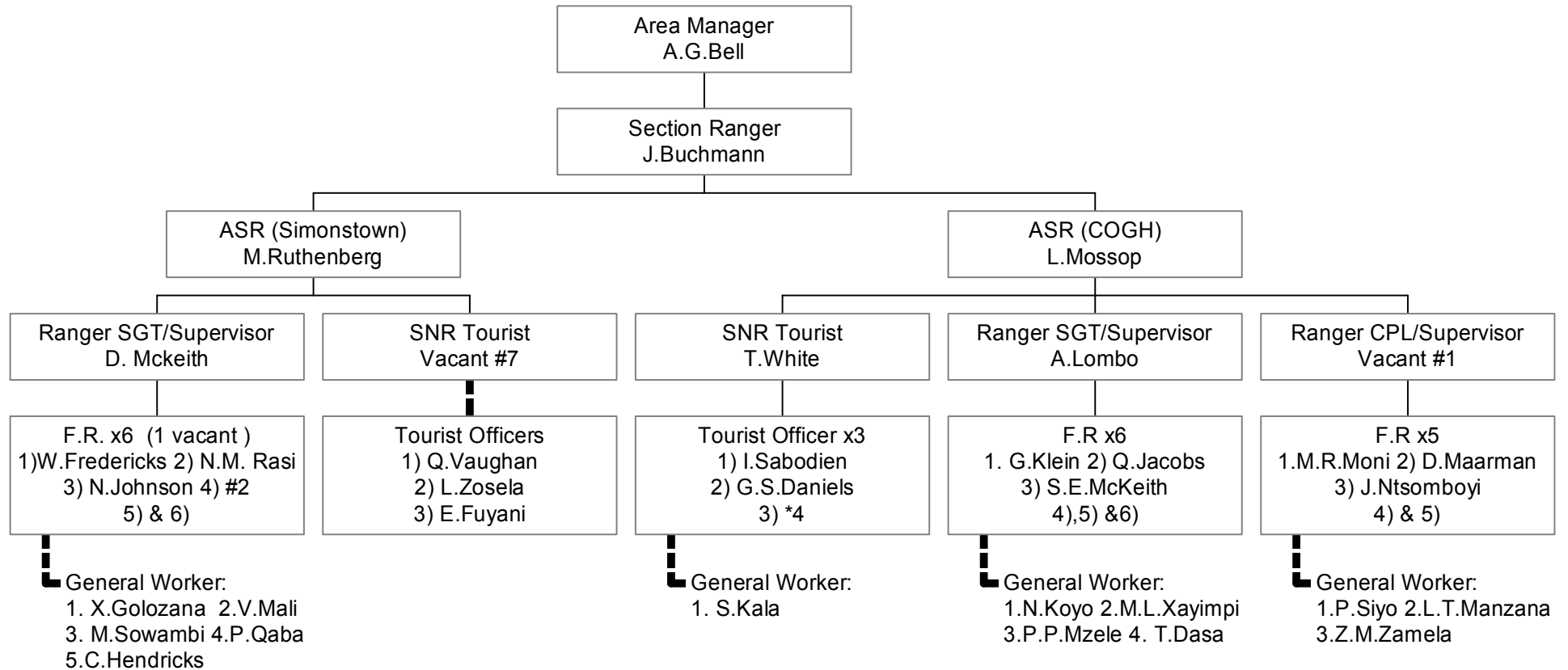
Visitor site	Preliminary statement of significance	Vulnerability statement	Status of heritage research	Proposed heritage management actions
<b>Silvermine North Picnic Area:</b> Removal of plantation trees (post 2000 fire) has been controversial in the context of heritage landscape issues.	None	None	Unknown	None
<b>Oudekraal:</b> Redevelopment by the then CMC was not informed by heritage analysis (pre-NHRA).	None	None	Unknown	None
<b>Schusterskraal Picnic Area:</b> As yet no development is planned for this area and no heritage analysis has been undertaken.	None	None	Unknown	None
<b>Olifantsbos:</b> As yet no development is planned for this area and no heritage analysis has been undertaken.	None	None	Unknown	None
<b>Platboom:</b> As yet no development is planned for this area and no heritage analysis has been undertaken.	None	None	Unknown	None
<b>Black Rocks:</b> As yet no development is planned for this area and no heritage analysis has been undertaken.	None	None	Unknown	None

### Appendix 3: Organograms of CPNP North and South Management Areas

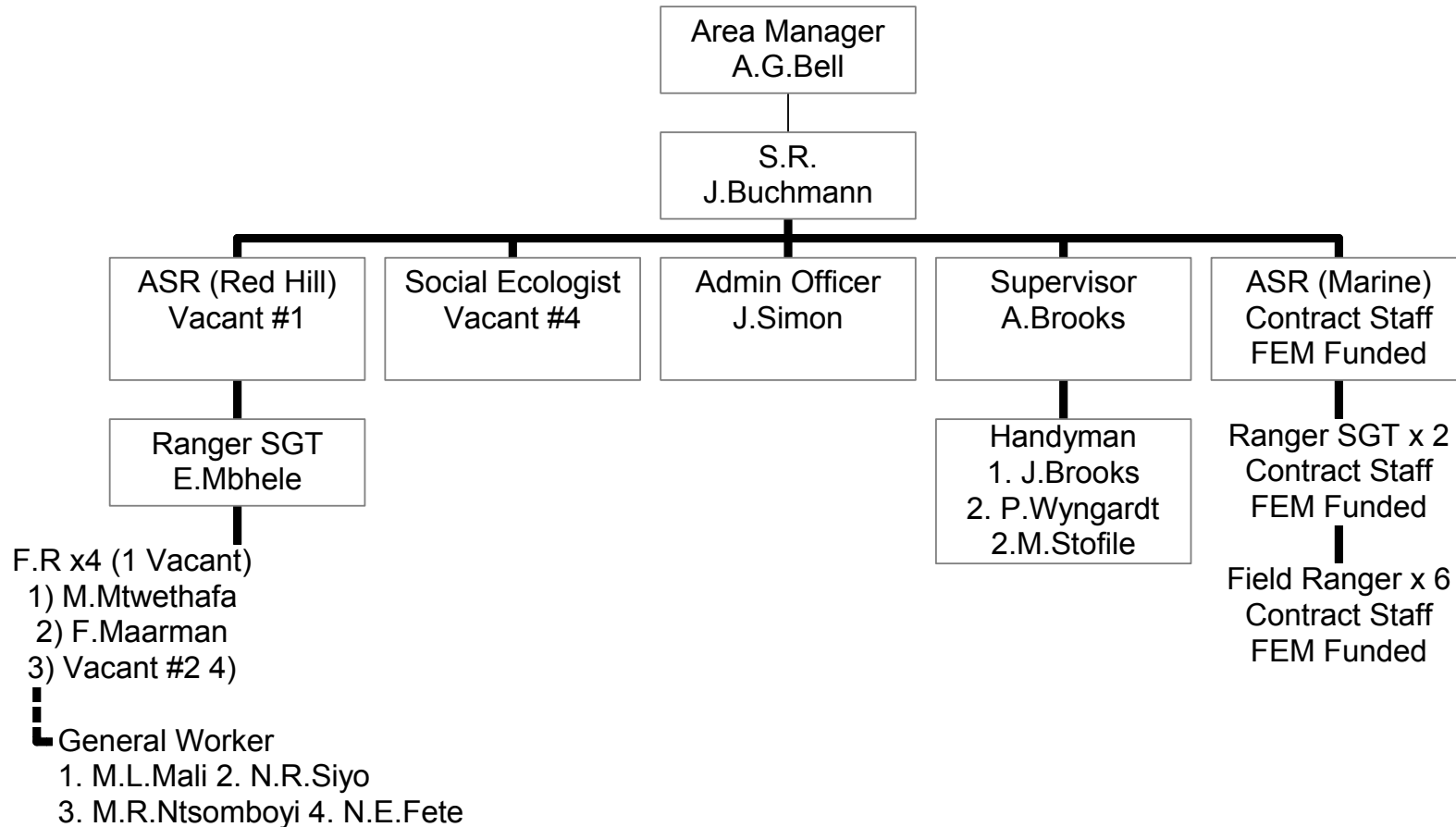
#### 1. Northern Management Area



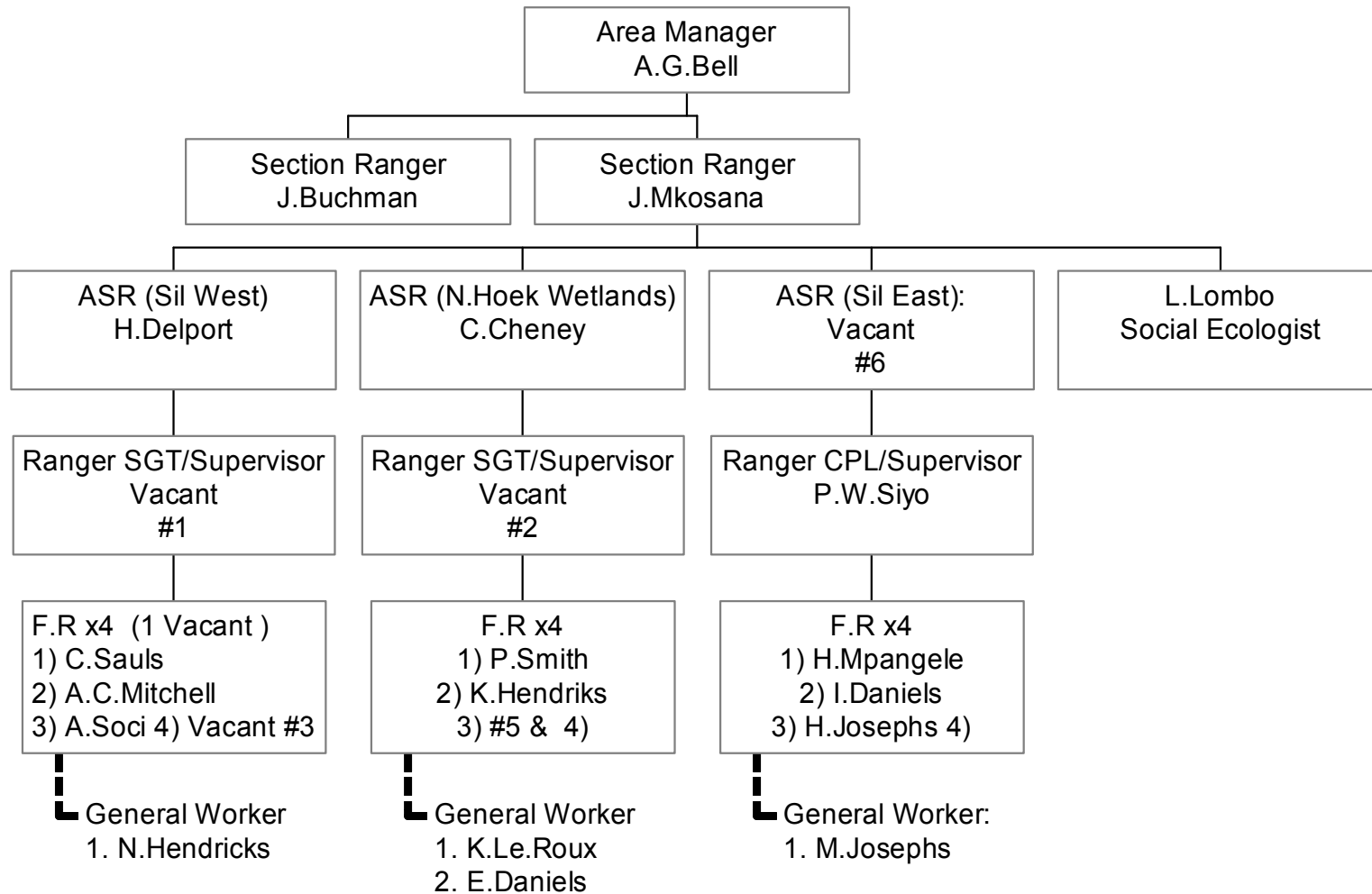
## 2 Southern Management Area – South 1



### 3. South Management Area – South 2



#### 4. Southern Management Area – Silvermine Central



**Appendix 4:**  
**Heritage Resource Database**  
**System Design**

**January 2003**

**Revision History**

<b>Date</b>	<b>Version</b>	<b>Description</b>	<b>Responsible</b>
30 January 2003	0.1	First draft	LS Gardner
05 Feb 2003	0.2	Edited version	Wendy Naude
10 Feb 2003	1.0	Edits	Grant Benn
13 Feb 2003	1.1	Final draft	LS Gardner

## Introduction

This document describes the design of the database and the capture form used for creating the inventory of heritage resources as well as recording the process followed in capturing the data.

This document should be read in conjunction with the preliminary design document presented as part of the HRMP Status report<sup>1</sup>

The database has been built and is ready to be populated with data collected in the process of creating the inventory.

## Requirements

The primary requirement is to provide a mechanism for capture, storage and management of heritage resource data. This requirement was extended to include a mechanism for capturing location and description (characteristics) of heritage resources within and adjacent to CPNP, i.e. the heritage resource inventory.

Numerous datasets exist, but vary widely in format and method of description or characterisation. The process of capturing the data should embody a standard method of assessment of the resource (category, age, grading, significance, vulnerability, etc) based on expert opinion. The result must be a consistent record of heritage resources and include enough information to support informed decision making in the context of resource management and CPNP operational responsibilities.

The design makes provision for a mechanism for adding to and editing of existing records in the database on an ongoing basis as more information becomes available or status changes for whatever reason. The development of this feature is not included in the scope of this project.

The inventory must be integrated with the existing information system (EIS) and be accessible via the user interface. There are two ways in which the system will be used:

- To maintain and update heritage resource data
- Provide data to facilitate operations and management of heritage resources

## Design

The system is designed to support the information management requirements identified in the Heritage Resource Management Plan HRMP (status report) and includes the following components:

---

<sup>1</sup> Refer to "Status report\_ Appendix 2 HRMP database design.doc"  
GISCOE Environmental Unit

### *Inventory*

An inventory of heritage resources is required to record the character and location of heritage resources within the Park. The inventory would include the known resources or groups of resources within and adjacent to the CPNP. Formats of existing data vary considerably and the inventoring of the resources facilitates standardisation and appraisal of the resources.

### *Capture form*

A capture form was developed in order to capture and assess the information. This is a standalone programme that can be installed on any PC. Where possible, drop-down menus were provided to ensure standardised and consistent entries into the database. A detailed manual was compiled to assist with the capture process and this document is included as an attachment (Appendix C: Populating the Heritage Capture Form.doc).

### *Database*

#### Capture form database

A Microsoft Access database is used for the capture of the attribute data. This database contains all the options for the drop-down menus available in the capture form. These drop-down menus were developed through an iterative process comprising numerous interactions with the Heritage Specialists. Additional “free text” fields have been provided for descriptions and elaboration on the categorical descriptions.

The user interacts with the database exclusively via the capture form.

The design of the database associated with the capture form is included as Appendix A. The design is described in terms of an entity/relationship diagram and includes a list of drop-down menus and options.

#### EIS database

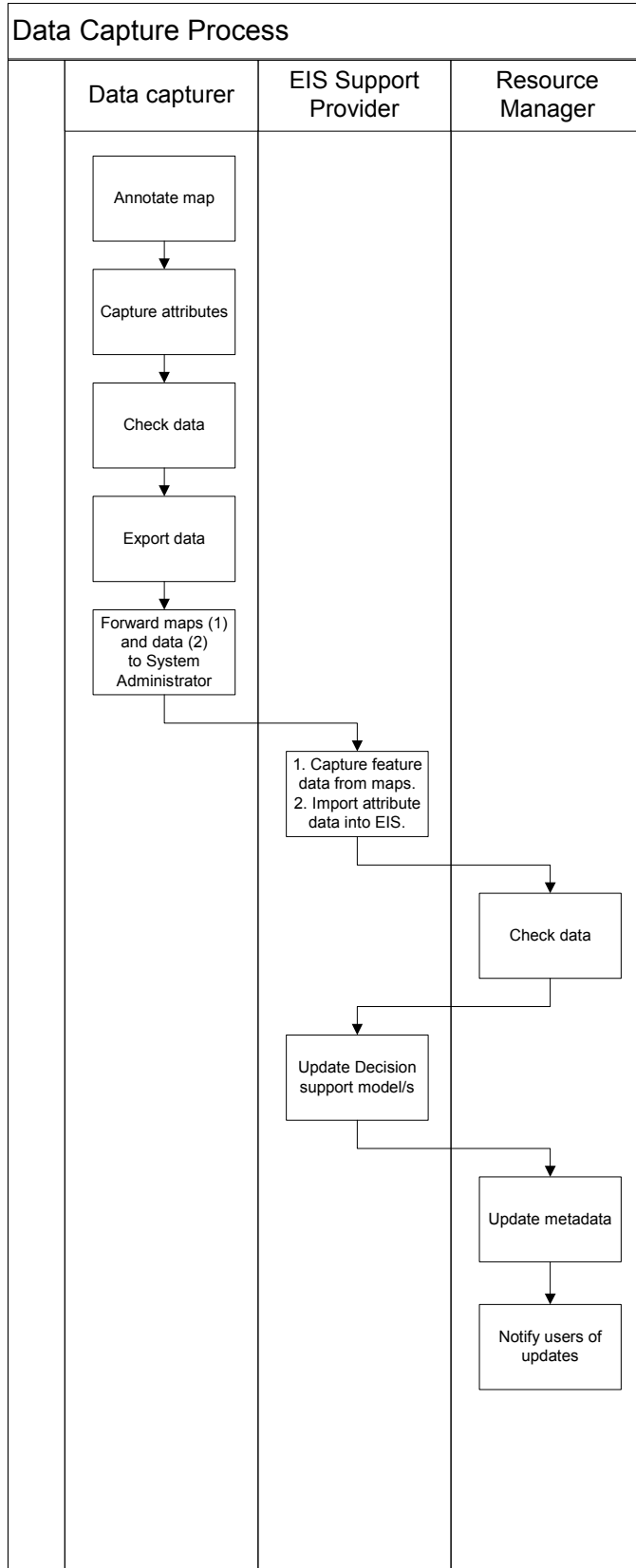
The CPNP EIS database has been extended to cater for the additional data being collected while creating the inventory. Table names and field names have been synchronised to follow the standard naming convention adopted for the EIS database. Appendix B contains the entity/relationship diagram for the EIS database.

The spatial component of the heritage data inventory will also be accommodated within the EIS database. The primary link will be the feature ID. This feature ID is constructed from the user ID (data capturer) plus a consecutive number. Each feature can therefore be traced back to the person who captured the data and made the initial assessment.

Where additional datasets exist and are managed by organisations other than CPNP, such as shipwrecks and specific archaeological sites, these datasets will be incorporated into the CPNP EIS database as separate layers. The proposed management strategy is as follows:

- Responsibility for updating and maintenance of datasets remains with the source.
- The process of integration with the EIS database must involve minimal changes to the dataset so that update procedures are straightforward and in the longer term may be automated.

**Process Flow**



## **Data maintenance**

At the end of the HRMP project the tools that will be available for viewing, maintenance and update will be restricted to the EIS interface and database (view only). Editing of attribute data will be accomplished by accessing the MS SQL Server database via the Enterprise Manager. Development of tools to edit and add data to the database is beyond the scope of this project.

## **User access, query and analysis**

Users will be able to access the heritage resource data via the EIS interface. Two types of “views” will be provided:

1. Heritage management view

This is the “heritage centric view” where the user’s objective will be to view the heritage resources in context of other spatially related data. Images and related documents can be linked to spatial features.

Users will not be able to edit the data at this stage. Online editing of map features and attribute data is outside of the scope of this project.

2. Operational / management view

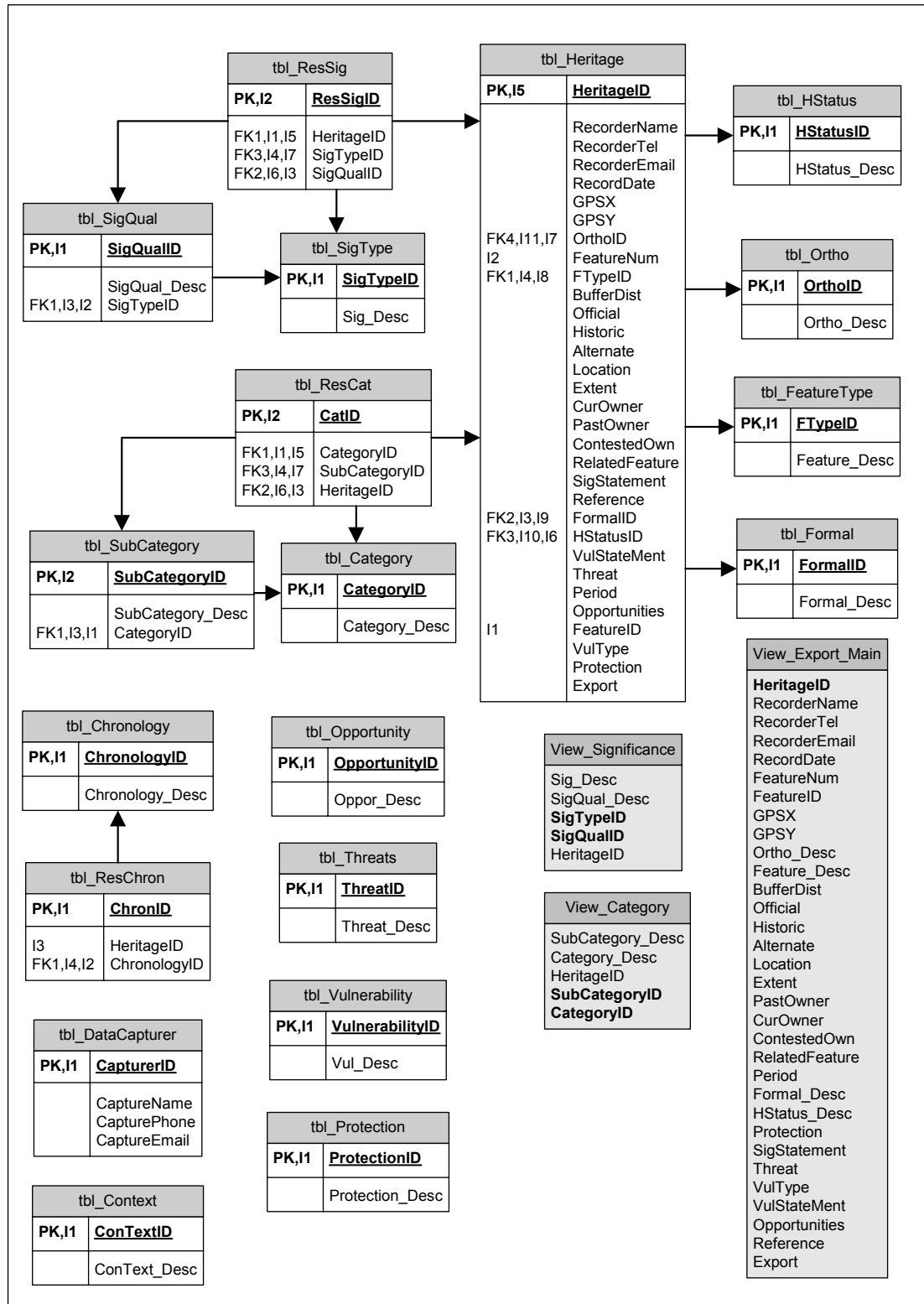
The operational/management views will have synthesised heritage layer(s) for context and decision making related to activities which will potentially have an impact on the heritage resource in some way e.g. alien clearing, development, making fire breaks.

The synthesised layers will be derived using the 100-metre grid layer, which will be populated with a sensitivity index (the derivation of which is still to be finalized). A simple example of a sensitivity index is a value derived from the number of heritage features occurring within any grid cell, this can be developed to focus on different forms of feature importance. The sensitivity index can be further refined by developing a sensitivity model as the grid layer is well suited to modelling and analysis and is currently being used within the EIS to model post clearing vegetation age and fire hazard. The Protea Atlas Data is also represented by means of a grid layer.

## Open issues

- Consistent assessment and description of heritage resources – the subjective nature of the assessment, categorisation and description of heritage resources could lead to inconsistent entries in the database. Some options for the descriptive categories are more subjective than others and open to individual interpretation.
- Datasets provided by other organisations will not conform to the inventory format, e.g. shipwrecks. There may need to be a process initiated to categorise and assess these datasets.
- Confirm that the data model and derivation of a sensitivity index is the correct approach. Finalise the measures of grid sensitivity as it pertains to heritage resources.
- Under-utilisation of the EIS as a management tool and lack of computer/technology literate personnel within the park may result in the system becoming a mere artifact. There is a pressing need to use and maintain the system for sustained usefulness.

## Appendix A: Capture Form Database Entity/Relationship Diagram



## Drop-down Menus

CapturerID	CaptureName	CapturePhone	CaptureEmail
1	Nicolas Baumann	27833083900	urbancon@iafrica.com
2	Henry Aikman	27833066768	babrius2@mweb.co.za
3	Antonia Malan	27837975672	amalan@beattie.uct.ac.za
4	Jim Hallinan	27217018692	jimh@parks-sa.co.za
5	eisadmin	27215511199	lgardner@gims.com
6	Sarah Winter	27824210510	sewinter@yebo.co.za

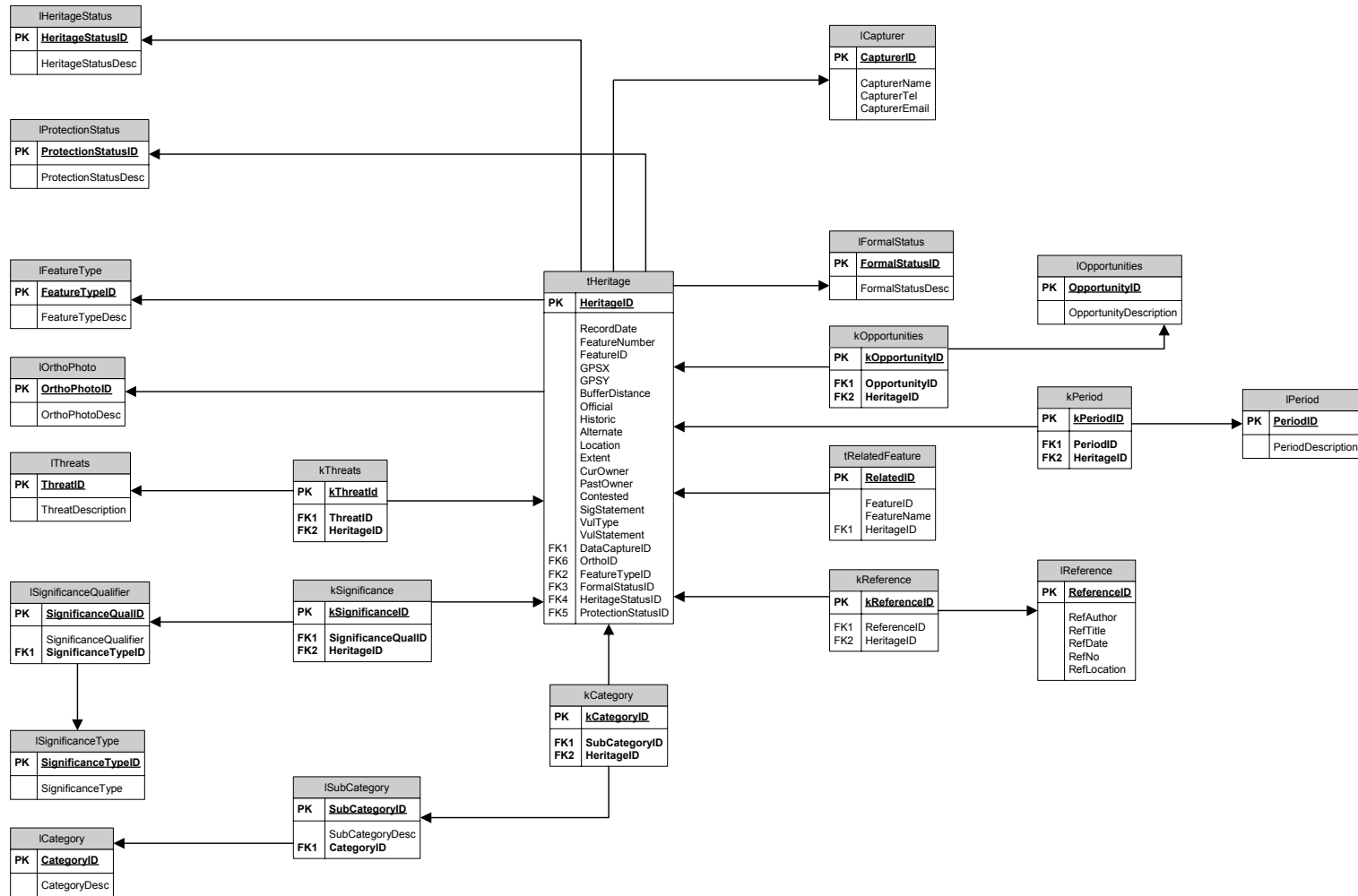
Ortho_Desc (Orthophoto Number)	Feature_Desc (Feature Number)	Chronology_Desc (Period)
3318CD18	Point	Geological Time
3318CD19	Line	ESA (3 mya)
3318CD20	Polygon	MSA (c 300 000 - 30 000 ya)
3318CD22	Grid Reference	LSA (before c 2 000 BP)
3318CD23		LSA (after c 2 000 BP)
3318CD24		Early contact
3318CD25		Dutch (1652 - 1795)
3418AB2		Dutch-British transition (1795 - 1850)
3418AB3		South African War
3418AB4		British colonial (1850 - 1910)
3418AB5		Union of SA (1911 - 1961)
3418AB7		World War I
3418AB8		World War II
3418AB9		Republic (1962 - 1996)
3418AB10		Democratic (1997 - present)
3418AB12		
3418AB13		
3418AB14		
3418AB15		
3418AB17		
3418AB18		
3418AB19		
3418AB20		
3418AB23		
3418AB24		
3418AB25		
3418AD3		
3418AD4		
3418AD5		
3418AD9		
3418AD10		
3418AD15		

<b>Category_Desc (Category)</b>	<b>SubCategory_Desc (Sub-Category)</b>
Landscapes	Natural
Landscapes	Pre-colonial
Landscapes	Planted
Landscapes	Productive
Landscapes	Townscapes and Historical Settlements
Landscapes	Scenic
Structures	Farmsteads
Structures	Residential
Structures	Industrial
Structures	Commercial
Structures	Military
Structures	Institutional
Structures	Public
Structures	Religious
Structures	Associated Structures
Structures	Geomatic
Structures	Ruins
Landscape Features	Farm Boundaries
Landscape Features	Significant Tree Groupings or Alignments
Landscape Features	Mountain Peaks and Ridgelines
Landscape Features	Open Space / Fields
Landscape Features	Rocky Outcrops
Geological	Sedimentary Features
Geological	Exposed Geological Surfaces
Geological	Intrusions
Geological	Contacts
Memorials	Monument
Memorials	Plaque
Memorials	Bench
Memorials	Trees and Plants
Military	Forts
Military	Batteries

<b>Formal_Desc (Formal Status)</b>	<b>HStatus_Desc (Heritage Status)</b>	<b>Protection_Desc (Protection Status)</b>
National	Undetermined	Unprotected
Provincial	Determined Significant	General Protection
Local	Grade 1	Policy
Undetermined	Grade 2	Local Authority
	Grade 3	Heritage Act
	Limited Significance	

<b>Sig_Desc (Significance Type)</b>	<b>SigQual_Desc (Significance Qualifier)</b>
Intrinsic	Age
Intrinsic	Scarcity
Intrinsic	Intactness
Intrinsic	Representation Value
Intrinsic	Historical layering
Associational	Intimacy
Associational	Duration
Associational	Evocative quality
Contextual / Experience	Coherence
Contextual / Experience	Intactness
Contextual / Experience	Interpretive qualities
Contextual / Experience	Continuity
Contextual / Experience	Vividness
Contextual / Experience	Relationship with setting
Intrinsic	Archaeological sequence
Contextual / Experience	Historical layering
Contextual / Experience	Unity

Threat_Desc (Threats)	Vul_Desc (Vulnerability Type)	Oppor_Desc (Opportunities)
Demolition	High	Interpretation
Removal of elements	Medium	Research, understanding
Clearing of surfaces or structures or landscaping	Low	Education
Installation of services		Revelation
Removal of significant vegetation		Appropriate / Adaptive reuse
Erosion		Economic
Lack of maintenance		Recreation
Intensive visitor use		Physical Exposure
Development		Unearthing
Visual conflict		Physical accessibility, visibility
Socio-political contestation		Experiential
Weathering		
Decay		
Concessions		
Adjacent urban development		
Fire management		
Inappropriate maintenance		
Intrusive elements		
Vandalism		
Depreciative behaviour		
Unauthorised / unsustainable exploitation / use		
Structural damage by vegetation		



Appendix B: EIS SQL Server Database: Entity/Relationship Diagram